

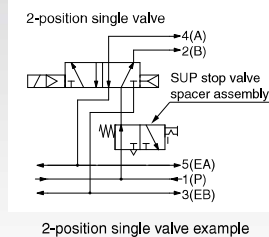
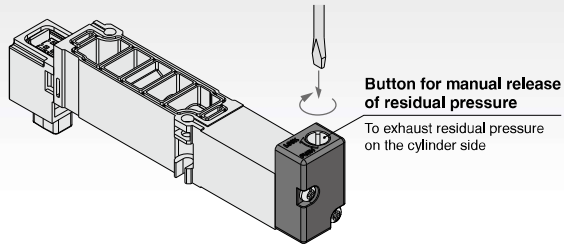
Improved Safety

Slotted Type

SUP Stop Valve Spacer

(With residual pressure release valve) **p. 618**

Air supply to each valve can be stopped individually. The valve and cylinder can be replaced without stopping other devices and equipment.

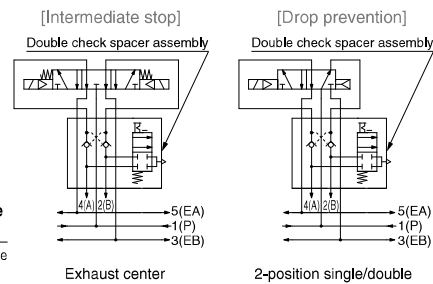
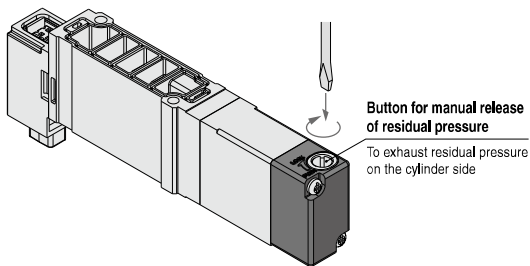


Slotted Type

Double Check Spacer

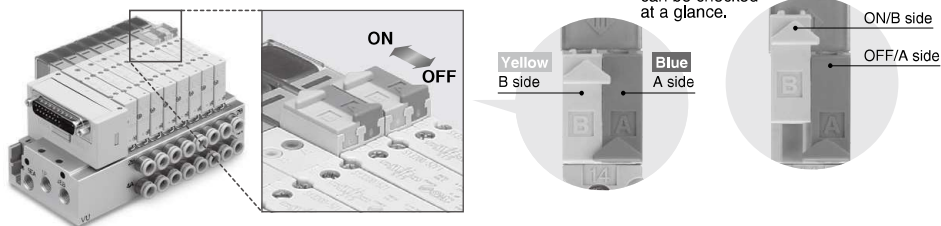
(With residual pressure release valve) **p. 619**

Long intermediate stops and position holding are possible.



With slide locking manual override

ON/OFF operation and locking can be performed manually.



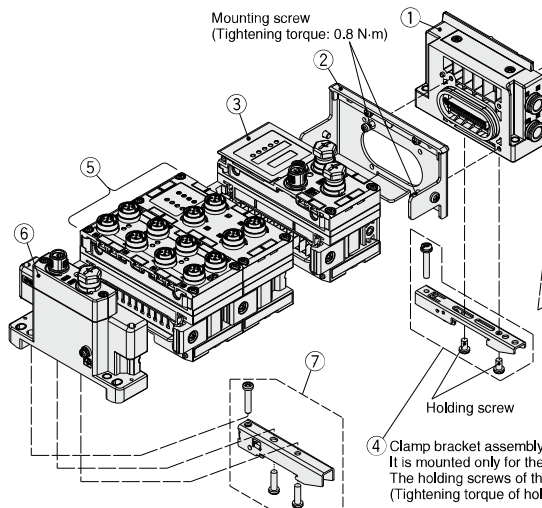
Type 10, 11, 12

Connector Connecting Base Manifold Exploded View

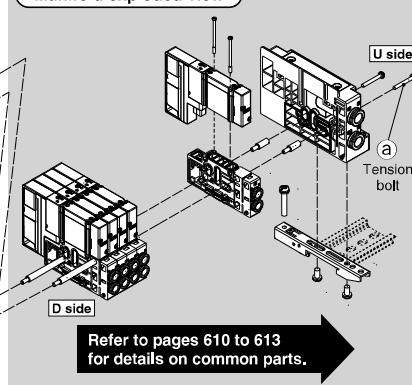
SY3000/5000/7000 Series

Wiring

EX600



Manifold exploded view



Manifold Parts Nos.

① SUP/EXH block assembly

SY 3 0M-1-1A

C8

Mounting

| | |
|-----|--------------------------------------|
| Nil | Direct mounting |
| D0 | DIN rail mounting (Without DIN rail) |

* For the bottom-ported type, the symbol is nil.

Series

| | |
|---|--------|
| 3 | SY3000 |
| 5 | SY5000 |
| 7 | SY7000 |

Pilot, Silencer/Piping type

| Symbol | Pilot type Internal External | Built-in silencer | Piping direction |
|--------|---------------------------------|----------------------|---------------------|
| Nil | ● | — | Side |
| S | ● | — | Side |
| R | — | ● | Side |
| V | — | — | Side |
| RV | — | ● | Top |
| VP | — | — | Top |
| B | — | — | Bottom |
| BS | — | — | Bottom |
| BR | — | — | Bottom |

*1 For silencer (supply side)

E port is plugged.

* "B" for the bottom-ported type can be selected for the SY5000/7000 series.

SUP/EXH block assembly (D side) accessories and the number of accessories

| Accessories | SY3000 | SY5000 SY7000 |
|-----------------|--------|------------------|
| a) Tension bolt | None*1 | 3 pcs. |

*1 Since the nuts are embedded in the SUP/EXH block

P, E port size (One-touch fittings)

| Symbol | P, E port | SY3000 | SY5000 | SY7000 | Note |
|--------|-----------|--------|--------|--------|---|
| C8 | ø8 | ● | — | — | Side/Bottom/ Top ported Metric size |
| C10 | ø10 | — | ● | — | |
| C12 | ø12 | — | — | ● | |
| N9 | ø5/16" | ● | — | — | Side/Bottom/ Top ported Inch size |
| N11 | ø3/8" | — | ● | — | |
| N13 | ø1/2" | — | — | ● | |
| L8 | ø8 | ● | — | — | Side ported Metric size |
| L10 | ø10 | — | ● | — | |
| L12 | ø12 | — | — | ● | |
| LN9 | ø5/16" | ● | — | — | Side ported Inch size |
| LN11 | ø3/8" | — | ● | — | |
| LN13 | ø1/2" | — | — | ● | |
| B8 | ø8 | ● | — | — | Side ported Metric size |
| B10 | ø10 | — | ● | — | |
| B12 | ø12 | — | — | ● | |
| BN9 | ø5/16" | ● | — | — | Side ported Inch size |
| BN11 | ø3/8" | — | ● | — | |
| BN13 | ø1/2" | — | — | ● | |
| 00*1 | Plug | ● | ● | ● | P/E port entry on one side or Top ported |

*1 It can be selected only if no symbol or "S" or "V" or "B" is selected for the pilot and the piping.

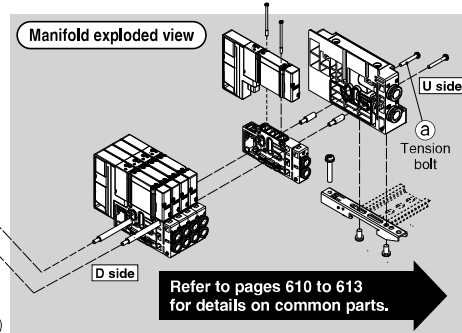
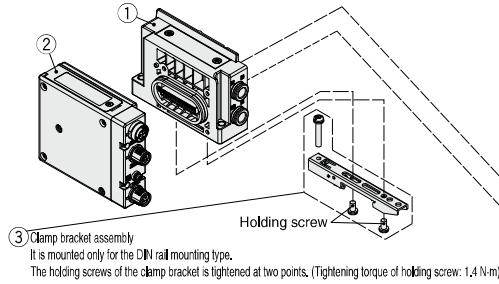
Type 10, 11, 12

Connector Connecting Base Manifold Exploded View

SY3000/5000/7000 Series

Wiring

EX260



Manifold Parts Nos.

① SUP/EXH block assembly

SY 3 0M-1-1A - C8 -

• Mounting

| | |
|-----|--------------------------------------|
| Nil | Direct mounting |
| D0 | DIN rail mounting (Without DIN rail) |

* For the bottom-ported type, the symbol is nil.

| Series | |
|--------|--------|
| 3 | SY3000 |
| 5 | SY5000 |
| 7 | SY7000 |

• Pilot, Silencer/Piping type

| Symbol | Pilot type Internal/External | Built-in silencer | Piping direction |
|--------|---------------------------------|----------------------|---------------------|
| Nil | ● | — | — |
| S | ● | — | Side |
| R | — | ● | — |
| V | — | — | — |
| RV | — | ● | Top |
| VP | ● | — | — |
| B | ● | — | Bottom |
| BS | — | ● | — |
| BR | — | ● | — |

*1 For silencer (supply side)
E port is plugged.* "B" for the bottom-ported type can be
selected for the SY5000/7000 series.SUP/EXH block assembly (D side)
accessories and the number of accessories

| Accessories | SY3000 | SY5000 SY7000 |
|----------------|--------|------------------|
| ① Tension bolt | None*1 | 3 pcs. |

*1 Since the nuts are embedded in the
SUP/EXH block

• P, E port size (One-touch fittings)

| Symbol | P, E port | SY3000 | SY5000 | SY7000 | Note |
|--------|-----------|--------|--------|--------|---|
| C8 | ø8 | ● | — | — | Side/Bottom/ Top ported Metric size |
| C10 | ø10 | — | ● | — | — |
| C12 | ø12 | — | — | ● | — |
| N9 | ø5/16" | — | — | — | Side/Bottom/ Top ported Inch size |
| N11 | ø3/8" | — | ● | — | — |
| N13 | ø1/2" | — | — | ● | — |
| L8 | ø8 | ● | — | — | Side ported Metric size |
| L10 | ø10 | — | ● | — | — |
| L12 | ø12 | — | — | ● | — |
| LN9 | ø5/16" | — | — | — | Side ported Inch size |
| LN11 | ø3/8" | — | ● | — | — |
| LN13 | ø1/2" | — | — | ● | — |
| B8 | ø8 | ● | — | — | Side ported Metric size |
| B10 | ø10 | — | ● | — | — |
| B12 | ø12 | — | — | ● | — |
| BN9 | ø5/16" | — | — | — | Side ported Inch size |
| BN11 | ø3/8" | — | ● | — | — |
| BN13 | ø1/2" | — | — | ● | — |
| 00*1 | Plug | ● | ● | ● | P/E port entry on one side or Top ported |

*1 It can be selected only if no symbol or "S" or "V" or "B" is selected for the pilot and the piping.

② EX260 SI unit (Fieldbus and Industrial Ethernet)

EX260-S PR1

• Communication protocol

| Symbol | Protocol | Number of outputs | SI unit output polarity | Communication connector | Manifold symbol | Symbol | Protocol | Number of outputs | SI unit output polarity | Communication connector | Manifold symbol |
|--------|--------------|----------------------|------------------------------|----------------------------|-----------------|--------|-----------------------|----------------------|------------------------------|----------------------------|-----------------|
| DN1 | DeviceNet® | 32 | Source/PNP (Negative common) | M12 | QAN | EC1 | EtherCAT | 32 | Source/PNP (Negative common) | M12 | DAN |
| DN2 | | | Sink/NPN (Positive common) | | QA | EC2 | | | Sink/NPN (Positive common) | | DA |
| DN3 | | | Source/PNP (Negative common) | | QBN | EC3 | | | Source/PNP (Negative common) | | DBN |
| DN4 | | | Sink/NPN (Positive common) | | QB | EC4 | | | Sink/NPN (Positive common) | | DB |
| PR1 | PROFIBUS DP | 32 | Source/PNP (Negative common) | M12 | NAN | PN1 | PROFINET | 32 | Source/PNP (Negative common) | M12 | FAN |
| PR2 | | | Sink/NPN (Positive common) | | NA | PN2 | | | Sink/NPN (Positive common) | | FA |
| PR3 | | | Source/PNP (Negative common) | | NBN | PN3 | | | Source/PNP (Negative common) | | FBN |
| PR4 | | | Sink/NPN (Positive common) | | NB | PN4 | | | Sink/NPN (Positive common) | | FB |
| PR5 | EtherNet/IP™ | 32 | Source/PNP (Negative common) | D-sub*1 | NCN | EN1 | EtherNet/IP™ | 32 | Source/PNP (Negative common) | M12 | EAN |
| PR6 | | | Sink/NPN (Positive common) | | NC | EN2 | | | Sink/NPN (Positive common) | | EA |
| PR7 | | | Source/PNP (Negative common) | | NDN | EN3 | | | Source/PNP (Negative common) | | EBN |
| PR8 | | | Sink/NPN (Positive common) | | ND | EN4 | | | Sink/NPN (Positive common) | | EB |
| MJ1 | CC-Link | 32 | Source/PNP (Negative common) | M12 | VAN | PL1 | Ethernet POWERLINK | 32 | Source/PNP (Negative common) | M12 | GAN |
| MJ2 | | | Sink/NPN (Positive common) | | VA | PL3 | | | Source/PNP (Negative common) | | GBN |
| MJ3 | | | Source/PNP (Negative common) | | VBN | IL1 | | | Source/PNP (Negative common) | | KAN |
| MJ4 | | | Sink/NPN (Positive common) | | VB | | | | | | |

*1 Enclosure is IP40 when the communication connector is D-sub.

EX260 SI Unit (Safety Communication)

EX260-F PS1

• Communication protocol

| Symbol | Protocol | Number of outputs | SI unit output polarity | Communication connector | Manifold symbol |
|--------|-----------|----------------------|------------------------------|----------------------------|-----------------|
| PS1 | PROFIsafe | 32 | Source/PNP (Negative common) | M12 | FPN |

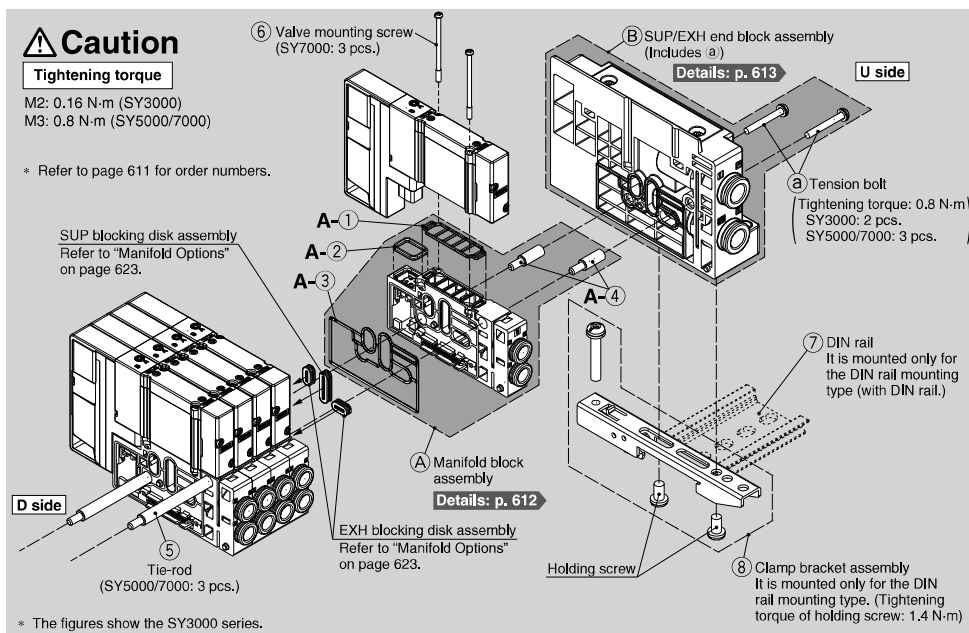
③ Clamp bracket assembly

| Series | Part no. |
|-------------|-------------|
| SY3000 | SY30M-15-1A |
| SY5000/7000 | SY50M-15-1A |

* Part number is for one
assembly.

SY3000/5000/7000 Series

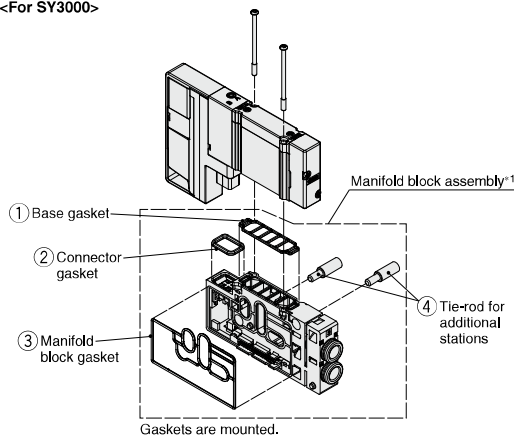
Manifold Exploded View (Common Parts)



Type 10, 11, 12: How to Increase Connector Type Manifolds

- 1 Loosen the U-side tension bolt (a), and remove the B SUP/EXH end block assembly.
- 2 Screw in 4 tie-rods for additional stations to the 5 tie-rod of the manifold.
(Screw them in until there is no gap between the tie-rods.)
- 3 Connect the A manifold block assembly and B SUP/EXH end block assembly to be added, and tighten the tension bolt (a).

<For SY3000>



Tightening torque for tension bolt (a) (M3): 0.8 N·m

Caution

1. Be sure to shut off the power and air supplies before disassembly. Furthermore, since air may remain inside the actuator, piping and manifold, confirm that the air is completely exhausted before performing any work.
2. When disassembly and assembly are performed, air leakage may result if the tightening of the tension bolt is inadequate.

*1 Manifold block assembly

| No. | Description | Quantity | Note |
|-----|---------------------------------|--|---|
| ①②③ | Gasket | 3 | For base, connector, and manifold block |
| ④ | Tie-rod for additional stations | SY3000: 2 pcs. SY5000: 3 pcs. SY7000: 3 pcs. | |

Refer to page 611 for ordering single unit.

Type 10, 11, 12

Connector Connecting Base Manifold Exploded View *SY3000/5000/7000 Series*

For SS5Y3-10/11/12, SS5Y5-(M)10/11/12, SS5Y7-(M)10/11/12

| No. | Description | | SY3000 | SY5000 | SY7000 | Note | |
|-----|--|---|---|--|---|---|-----------------|
| A-① | Manifold block assembly Tie-rod for additional stations ^{*1} | Base gasket (for connector connecting base) | SY30M-9-1A | SY50M-9-1A | SY70M-9-1A | Part numbers shown on the left are for 10 valves. (10 pcs.) | |
| A-② | | Connector gasket | SX3000-146-2 | | | Supplied individually | |
| A-③ | | Manifold block gasket | SY30M-9-2 | SY50M-9-2 | SY70M-9-2 | Supplied individually | |
| A-④ | | SY3000/5000/7000 | SY3000-49-2-A (10.5 mm pitch) | SV2000-55-2A-A (16 mm pitch) | SY70M-49-2-A ^{*2} (19 mm pitch) | 2 pcs. supplied (SY3000), 3 pcs. supplied (SY5000/7000) | |
| | | For mixed mounting of SY3000/5000: SY3000 A, B port size ø8, ø5/16" | SV2000-55-2A-A (16 mm pitch) | | | — | 3 pcs. supplied |
| | | For mixed mounting of SY3000/5000: SY3000 except A, B port size ø8, ø5/16" ^{*4} | SY50M-49-2 (12.5 mm pitch) | | | — | 3 pcs. supplied |
| ⑤ | Tie-rod | SY3000/5000/7000 | VVQC1000-TR-□ (10.5 mm pitch) | SV2000-55-1-□-A ^{*3} (16 mm pitch) | SY70M-49-1-□-A ^{*4} (19 mm pitch) | □: Manifold stations (2 to 24 stations) 2 pcs. supplied (SY3000), 3 pcs. supplied (SY5000/7000) | |
| | | Mixed mounting type manifold | SY50M-49-1-□-A ^{*3+4} (12.5 mm pitch) | | — | □: Manifold stations (2 to 24 stations) 3 pcs. supplied | |
| | | | SV2000-55-1-□-A ^{*5} (16 mm pitch) | | — | | |
| | | | — | | SY70M-49-1-□-A (19 mm pitch) | | |
| ⑥ | Valve mounting screw | Round head combination screw | SY3000-23-24A (M2 x 32) | SY5000-221-1A (M3 x 32.5) | SY7000-221-1A (M3 x 36.5) | Part numbers shown on the left are as follows. SY3000/5000: for 10 valves (20 pcs. included) SY7000: for 10 valves (30 pcs. included) | |
| | | Hexagon socket head cap screw | SY3000-222-1A (M2 x 32) | SY5000-222-1A (M3 x 32.5) | SY7000-222-1A (M3 x 36.5) | | |
| ⑦ | DIN rail | | VZ1000-11-1-□ | | VZ1000-11-4-□ | Refer to page 616. | |
| ⑧ | Clamp bracket assembly (for connector connecting base) | | SY30M-15-1A | SY50M-15-1A | | Supplied individually | |
| ⑨ | Tension bolt (for connector connecting base) ^{*6} | | AC00530 | SX3000-145-21 | | Supplied individually | |

*1 The manifold of the SY3000 (SS5Y3-10/11/12) can be assembled by connecting the tie-rods for additional stations for the number of manifold stations. However, the manifold of the SY5000 or SY7000 (SS5Y5/7-10/11/12 including mixed mounting) cannot be assembled by connecting the tie-rods for additional stations for the number of manifold stations.

*2 Includes the case when mounting with the SY5000

*3 When mounting only the SY3000 (12.5 mm pitch except A, B port size ø8, ø5/16")

*4 The port sizes except A, B port size ø8, ø5/16" are the following: ø2, ø3.2, ø4, ø6, ø1/8", ø5/32", ø1/4".

*5 When mounting only the SY3000 (16 mm pitch A, B port size ø8, ø5/16")

*6 For the SY3000 SUP/EXH end block (there are no tension bolts for the SY3000 SUP/EXH block) or the SY5000 and SY7000 SUP/EXH (end) block

SY3000/5000/7000 Series

Manifold Parts Nos.

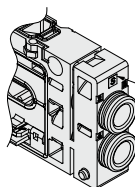
① Manifold block assembly

SY **3** 0M-2-**1** D A-C**6**

| Series | |
|--------|--------|
| 3 | SY3000 |
| 5 | SY5000 |
| 7 | SY7000 |

| Piping direction | |
|------------------|-----------------|
| 1 | Side/Top ported |
| 2 | Bottom ported |

* "2" (bottom ported) can be selected for the SY5000/7000 series.



Single wiring
Marked with S

| Wiring type | |
|-------------|---------------|
| S | Single wiring |
| D | Double wiring |

A, B port size (One-touch fittings)

| Symbol | A, B port | SY3000 | SY5000 | SY7000 | Note |
|--------|-----------|-----------------|--------|--------|--------------------------------|
| C2 | ø2 | ● | — | — | |
| C3 | ø3.2 | ● | — | — | |
| C4 | ø4 | ● | ● | — | Side/Bottom ported Metric size |
| C6 | ø6 | ● | ● | — | |
| C8 | ø8 | — ^{*1} | ● | ● | |
| C10 | ø10 | — | — | ● | |
| C12 | ø12 | — | — | ● | |
| N1 | ø1/8" | ● | — | — | Side/Bottom ported Inch size |
| N3 | ø5/32" | ● | ● | — | |
| N7 | ø1/4" | ● | ● | ● | |
| N9 | ø5/16" | — ^{*1} | ● | ● | |
| N11 | ø3/8" | — | — | ● | |

*1 Refer to mixed mounting type for ø8, ø5/16".

| Symbol | A, B port | SY3000 | SY5000 | SY7000 | Note |
|--------|-----------|-----------------|--------|--------|-------------------------|
| L4 | ø4 | ● | ● | — | |
| L6 | ø6 | ● | ● | ● | Side ported Metric size |
| L8 | ø8 | — ^{*1} | ● | ● | |
| L10 | ø10 | — | — | ● | |
| L12 | ø12 | — | — | ● | |
| LN3 | ø5/32" | ● | — | — | |
| LN7 | ø1/4" | ● | ● | — | Side ported Inch size |
| LN9 | ø5/16" | — ^{*1} | — | — | |
| LN11 | ø3/8" | — | — | ● | |
| B4 | ø4 | ● | ● | — | |
| B6 | ø6 | ● | ● | ● | Side ported Metric size |
| B8 | ø8 | — ^{*1} | ● | ● | |
| B10 | ø10 | — | — | ● | |
| B12 | ø12 | — | — | ● | |
| BN3 | ø5/32" | ● | — | — | |
| BN7 | ø1/4" | ● | ● | — | Side ported Inch size |
| BN9 | ø5/16" | — ^{*1} | — | — | |
| BN11 | ø3/8" | — | — | ● | |
| 00 | Plug | ● | ● | ● | Top ported |

① Mixed mounting of the SY3000/5000 Manifold block assembly for mounting the SY3000

SY50M-2-**3** D A-C**6**

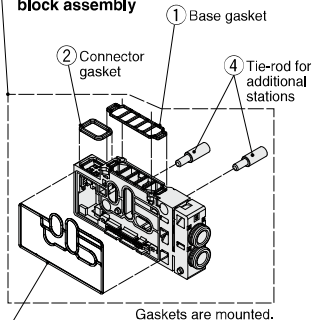
| Piping direction | |
|------------------|-----------------|
| 3 | Side/Top ported |
| 4 | Bottom ported |

| Wiring type | |
|-------------|---------------|
| S | Single wiring |
| D | Double wiring |

A, B port size (One-touch fittings)

| Symbol | A, B port | Note | Symbol | A, B port | Note |
|--------|-----------|--------------------------------|--------|-----------|-------------------------|
| C2 | ø2 | | L4 | ø4 | Side ported Metric size |
| C3 | ø3.2 | Side/Bottom ported Metric size | L6 | ø6 | Side ported Metric size |
| C4 | ø4 | | LN3 | ø5/32" | Side ported Inch size |
| C6 | ø6 | | LN7 | ø1/4" | Side ported Inch size |
| N1 | ø1/8" | Side/Bottom ported Inch size | B4 | ø4 | Side ported Metric size |
| N3 | ø5/32" | | B6 | ø6 | Side ported Metric size |
| N7 | ø1/4" | | BN3 | ø5/32" | Side ported Inch size |
| | | | BN7 | ø1/4" | Side ported Inch size |
| | | | 00 | Plug | Top ported |

① Manifold (All parts inside — are included.) block assembly



Gaskets are mounted.

① Mixed mounting of the SY3000/5000 Manifold block assembly for mounting the SY3000 valves on the SY5000 manifolds at A, B port size: ø8, ø5/16"

(A manifold block assembly for mounting the SY3000 valves on the SY5000 manifolds at A, B port size: ø8, ø5/16")

SY50M-2-**5** D A-C**8**

| Piping direction | |
|------------------|---------------|
| 5 | Side ported |
| 6 | Bottom ported |

| Wiring type | |
|-------------|---------------|
| S | Single wiring |
| D | Double wiring |

A, B port size (One-touch fittings)

| Symbol | A, B port | Note |
|--------|-----------|--------------------------------|
| C8 | ø8 | Side/Bottom ported Metric size |
| N9 | ø5/16" | Side/Bottom ported Inch size |
| L8 | ø8 | Side ported Metric size |
| LN9 | ø5/16" | Side ported Inch size |
| B8 | ø8 | Side ported Metric size |
| BN9 | ø5/16" | Side ported Inch size |

Manifold block assembly accessories and the number of accessories

| Accessories | SY3000 | SY5000 SY7000 ^{*1} |
|--|--------|-----------------------------|
| ① Base gasket | 1 pc. | |
| ② Connector gasket | 1 pc. | |
| ③ Manifold block gasket | 1 pc. | |
| ④ Tie-rod assembly for additional stations | 2 pcs. | 3 pcs. |

*1 Including mixed mounting type

① Mixed mounting of the SY5000/7000 Manifold block assembly for mounting the SY5000

SY70M-2-**3** D A-C**10**

| Piping direction | |
|------------------|-----------------|
| 3 | Side/Top ported |
| 4 | Bottom ported |

| Wiring type | |
|-------------|---------------|
| S | Single wiring |
| D | Double wiring |

A, B port size (One-touch fittings)

| Symbol | A, B port | Note | Symbol | A, B port | Note | Symbol | A, B port | Note |
|--------|-----------|--------------------------------|--------|-----------|-------------------------|--------|-----------|-------------------------|
| C6 | ø6 | | L6 | ø6 | | B6 | ø6 | |
| C8 | ø8 | Side/Bottom ported Metric size | L8 | ø8 | Side ported Metric size | B8 | ø8 | Side ported Metric size |
| C10 | ø10 | Side/Bottom ported Metric size | L10 | ø10 | Side ported Metric size | B10 | ø10 | Side ported Metric size |
| C12 | ø12 | | L12 | ø12 | | B12 | ø12 | |
| N7 | ø1/4" | Side/Bottom ported Inch size | LN11 | ø3/8" | Side ported Inch size | BN11 | ø3/8" | Side ported Inch size |
| N9 | ø5/16" | | | | | 00 | Plug | Top ported |
| N11 | ø3/8" | | | | | | | |

Manifold Parts Nos.**② SUP/EXH end block assembly****SY 3 0M-3- 1A -C8-**● **Series**

| | |
|---|--------|
| 3 | SY3000 |
| 5 | SY5000 |
| 7 | SY7000 |

● **Mounting**

| | |
|-----|--------------------------------------|
| Nil | Direct mounting |
| D0 | DIN rail mounting (Without DIN rail) |

* For the bottom-ported type, the symbol is nil.

● **Pilot, Silencer/Piping type**

| Symbol | Pilot type | | Built-in silencer | Piping direction |
|--------|------------|----------|-------------------|------------------|
| | Internal | External | | |
| Nil | ● | — | — | Side |
| S | ● | — | — | |
| R | — | ● | — | |
| V | ● | — | — | |
| RV | — | ● | — | Top |
| VP | ● | — | ● ^{*1} | |
| B | ● | — | — | |
| BS | ● | — | ● | Bottom |
| BR | — | ● | — | |

*1 For silencer (supply side)

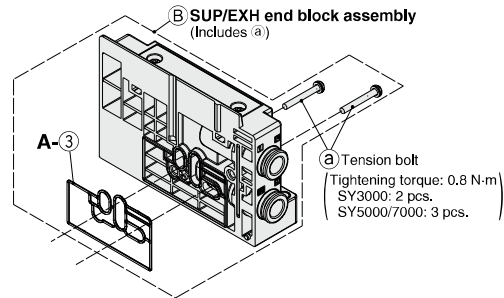
E port is plugged.

* "B" for the bottom-ported type can be selected for the SY5000/7000 series.

● **P, E port size (One-touch fittings)**

| Symbol | P, E port | SY3000 | SY5000 | SY7000 | Note |
|------------------|-----------|--------|--------|--------|--|
| C8 | ø8 | ● | — | — | Side/Bottom/Top ported Metric size |
| C10 | ø10 | — | ● | — | |
| C12 | ø12 | — | — | ● | |
| N9 | ø5/16" | ● | — | — | Side/Bottom/Top ported Inch size |
| N11 | ø3/8" | — | ● | — | |
| N13 | ø1/2" | — | — | ● | |
| L8 | ø8 | ● | — | — | Side ported Metric size |
| L10 | ø10 | — | ● | — | |
| L12 | ø12 | — | — | ● | |
| LN9 | ø5/16" | ● | — | — | Side ported Inch size |
| LN11 | ø3/8" | — | ● | — | |
| LN13 | ø1/2" | — | — | ● | |
| B8 | ø8 | ● | — | — | Side ported Metric size |
| B10 | ø10 | — | ● | — | |
| B12 | ø12 | — | — | ● | |
| BN9 | ø5/16" | ● | — | — | Side ported Inch size |
| BN11 | ø3/8" | — | ● | — | |
| BN13 | ø1/2" | — | — | ● | |
| 00 ^{*1} | Plug | ● | ● | ● | P/E port entry on one side or Top ported |

*1 It can be selected only if no symbol or "S" or "V" or "B" is selected for the pilot and the piping.

**SUP/EXH end block assembly accessories and the number of accessories**

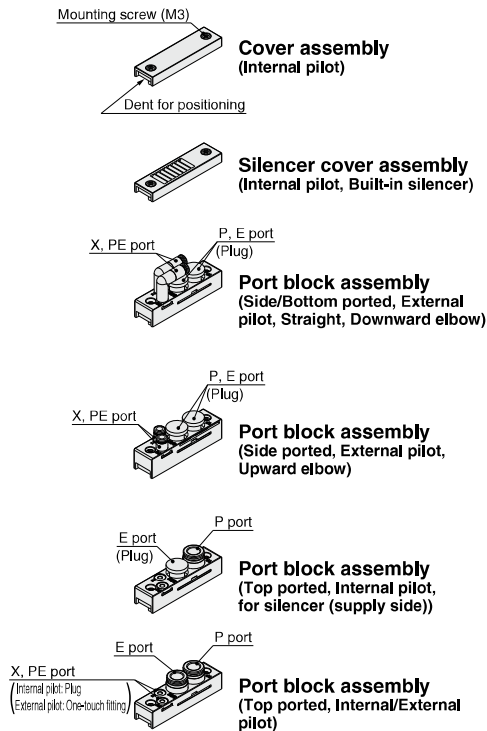
| Accessories | SY3000 | SY5000/7000 |
|---------------------------|--------|-------------|
| ② Tension bolt | 2 pcs. | 3 pcs. |
| A-③ Manifold block gasket | 1 pc. | |

Gasket is mounted.

SY3000/5000/7000 Series

Manifold Parts Nos.

■ Cover assembly/Silencer cover assembly/Port block assembly for SUP/EXH (end) block assembly



* Cover assembly, silencer cover assembly, and port block assembly are included in the SUP/EXH (end) block assembly, but they need to be ordered for piping direction change.

Tightening torque for mounting screw
 SY3000/5000 (M3): 0.8 N·m
 SY7000 (M4): 1.4 N·m

⚠ Caution

1. Be sure to shut off the power and air supplies before disassembly.
 Furthermore, since air may remain inside the actuator, piping, and manifold, confirm that the air is completely exhausted before performing any work.
2. When disassembly and assembly are performed, air leakage may result if the tightening of the cover and port block assemblies are inadequate.

SY 3 0M-4- 1 A

SY 3 0M-5- 1 A

SY 3 0M-6- 1 AR - 00

A, B port
One-touch fittings
piping direction

| | |
|-----|--|
| Nil | Straight, Downward elbow (Side ported) |
| V | Upward elbow (Side ported) |

X, PE port One-touch fitting type

| Symbol | X, PE port | SY3000 | SY5000 | SY7000 |
|--------|-------------|--------|--------|--------|
| Nil | Metric size | ● | ● | — |
| | — | — | — | ● |
| U | Inch size | ● | ● | — |
| | — | — | — | ● |

SY 3 0M-6- 3 AV - C8

SY 3 0M-6- 1 A V - C8

Series

| | |
|---|--------|
| 3 | SY3000 |
| 5 | SY5000 |
| 7 | SY7000 |

Pilot type

| | |
|-----|----------------|
| Nil | Internal pilot |
| R | External pilot |

P, E port size (One-touch fittings)

| Symbol | P, E port | SY3000 | SY5000 | SY7000 |
|--------|-----------|--------|--------|--------|
| C8 | ø8 | ● | — | — |
| C10 | ø10 | — | ● | — |
| C12 | ø12 | — | — | ● |
| N9 | ø5/16" | ● | — | — |
| N11 | ø3/8" | — | ● | — |
| N13 | ø1/2" | — | — | ● |

SY3000/5000/7000 Series

One-touch Fitting, Plug Assembly Part Nos.

Refer to "How to Replace One-touch Fittings" on page 709 for the replacement method.

One-touch fittings

| Port size | | | SY3000 | SY5000 | SY7000 |
|-------------------------|-------------|--------|-----------------|------------------|------------------|
| A, B port ^{*1} | Metric size | ø2 | VVQ1000-50A-C2 | — | — |
| | | ø3,2 | VVQ1000-50A-C3 | — | — |
| | | ø4 | VVQ1000-50A-C4 | VVQ1000-51A-C4 | — |
| | | ø6 | VVQ1000-50A-C6 | VVQ1000-51A-C6 | VVQ2000-51A-C6 |
| | | ø8 | — | VVQ1000-51A-C8 | VVQ2000-51A-C8 |
| | | ø10 | — | — | VVQ2000-51A-C10 |
| | | ø12 | — | — | KQ2H12-17-X224 |
| | | ø4 | SZ3000-73-1A-L4 | SZ3000-74-1A-L4 | — |
| | | ø6 | SZ3000-73-1A-L6 | SZ3000-74-1A-L6 | SZ3000-83-1A-L6 |
| | | ø8 | — | SZ3000-74-1A-L8 | SZ3000-83-1A-L8 |
| | | ø10 | — | — | SZ3000-83-1A-L10 |
| | | ø12 | — | — | KQ2L12-17N-X224 |
| | Inch size | ø1/8" | VVQ1000-50A-N1 | — | — |
| | | ø5/32" | VVQ1000-50A-N3 | VVQ1000-51A-N3 | — |
| | | ø1/4" | VVQ1000-50A-N7 | VVQ1000-51A-N7 | VVQ2000-51A-N7 |
| | | ø5/16" | — | VVQ1000-51A-N9 | VVQ2000-51A-N9 |
| | | ø3/8" | — | — | VVQ2000-51A-N11 |
| | | ø5/32" | KJL03-95-X224 | — | — |
| | | ø1/4" | KJL07-95-X224 | KQ2L07-14-X224 | — |
| | | ø5/16" | — | KQ2L09-14-X224 | — |
| | | ø3/8" | — | — | KQ2L11-14-X224 |
| | | ø5/32" | KJL03-95-X225 | — | — |
| | | ø1/4" | KJL07-95-X225 | KQ2L07-14-X225 | — |
| | | ø5/16" | — | KQ2L09-14-X225 | — |
| P, E port | Metric size | ø8 | VVQ1000-51A-C8 | — | — |
| | | ø10 | — | VVQ2000-51A-C10 | — |
| | | ø12 | — | — | VVQ4000-50B-C12 |
| | | ø8 | SZ3000-74-1A-L8 | — | — |
| | | ø10 | — | SZ3000-83-1A-L10 | — |
| | | ø12 | — | — | KQ2L12-19N-X224 |
| | | ø8 | SZ3000-74-2A-L8 | — | — |
| | | ø10 | — | SZ3000-83-2A-L10 | — |
| | | ø12 | — | — | KQ2W12-19N-X224 |
| | Inch size | ø5/16" | VVQ1000-51A-N9 | — | — |
| | | ø3/8" | — | VVQ2000-51A-N11 | — |
| | | ø1/2" | — | — | VVQ4000-50B-N13 |
| | | ø5/16" | KQ2L09-14-X224 | — | — |
| | | ø3/8" | — | KQ2L11-14-X224 | — |
| | | ø1/2" | — | — | KQ2L13-19N-X224 |
| | | ø5/16" | KQ2L09-14-X225 | — | — |
| | | ø3/8" | — | KQ2L11-14-X225 | — |
| | | ø1/2" | — | — | KQ2W13-19N-X224 |

*1 A and B ports (ø8 and ø5/16") of the SY3000 and 5000 mixed mounting type are the same as those of the SY5000.

* Purchasing order is available in units of 10 pieces. Additionally, when performing the piping in the same orientation using the elbow type, please order "elbow type" or "long elbow type" appropriately.

* Select the same port size for both the A and B ports.

Plug assembly

| | SY3000 | SY5000 | SY7000 |
|-----------|-------------|-------------|--------------|
| A, B port | VVQ0000-58A | VVQ1000-58A | VVQ2000-58A |
| P, E port | VVQ1000-58A | VVQ2000-58A | SY9000-62-1A |

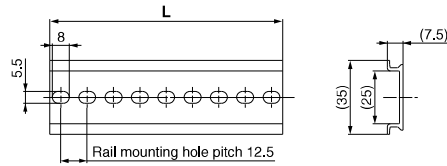
* Purchasing order is available in units of 10 pieces.

SY3000/5000/7000 Series Manifold Options

■ DIN rail dimensions/weight for the SY3000/5000 **Plug-in** connector connecting base

VZ1000-11-1-□

* After confirming the L3 dimension in the dimensions table of each series, refer to the DIN rail dimensions table below and specify the number in the box □.

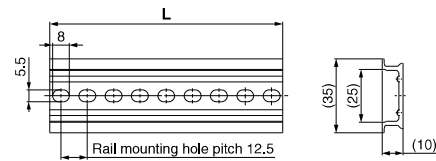


| No. | 0 | 1 | 2 | 3 | 4 | 5 | 6 | 7 | 8 | 9 | 10 | 11 | 12 | 13 | 14 | 15 | 16 | 17 | 18 |
|-------------|-------|-------|-------|-------|-------|-------|-------|-------|-------|-------|-------|-------|-------|-------|-------|-------|-------|-------|-------|
| L dimension | 98 | 110.5 | 123 | 135.5 | 148 | 160.5 | 173 | 185.5 | 198 | 210.5 | 223 | 235.5 | 248 | 260.5 | 273 | 285.5 | 298 | 310.5 | 323 |
| Weight [g] | 17.6 | 19.9 | 22.1 | 24.4 | 26.6 | 28.9 | 31.1 | 33.4 | 35.6 | 37.9 | 40.1 | 42.4 | 44.6 | 46.9 | 49.1 | 51.4 | 53.6 | 55.9 | 58.1 |
| No. | 19 | 20 | 21 | 22 | 23 | 24 | 25 | 26 | 27 | 28 | 29 | 30 | 31 | 32 | 33 | 34 | 35 | 36 | 37 |
| L dimension | 335.5 | 348 | 360.5 | 373 | 385.5 | 398 | 410.5 | 423 | 435.5 | 448 | 460.5 | 473 | 485.5 | 498 | 510.5 | 523 | 535.5 | 548 | 560.5 |
| Weight [g] | 60.4 | 62.5 | 64.9 | 67.1 | 69.4 | 71.6 | 73.9 | 76.1 | 78.4 | 80.6 | 82.9 | 85.1 | 87.4 | 89.6 | 91.9 | 94.1 | 96.4 | 98.6 | 100.9 |
| No. | 38 | 39 | 40 | 41 | 42 | 43 | 44 | 45 | 46 | 47 | 48 | 49 | 50 | 51 | 52 | 53 | 54 | 55 | 56 |
| L dimension | 573 | 585.5 | 598 | 610.5 | 623 | 635.5 | 648 | 660.5 | 673 | 685.5 | 698 | 710.5 | 723 | 735.5 | 748 | 760.5 | 773 | 785.5 | 798 |
| Weight [g] | 103.1 | 105.4 | 107.6 | 109.9 | 112.1 | 114.4 | 116.6 | 118.9 | 121.1 | 123.4 | 125.6 | 127.9 | 130.1 | 132.4 | 134.6 | 136.9 | 139.1 | 141.4 | 143.6 |
| No. | 57 | 58 | 59 | 60 | 61 | 62 | 63 | 64 | 65 | 66 | 67 | 68 | 69 | 70 | 71 | | | | |
| L dimension | 810.5 | 823 | 835.5 | 848 | 860.5 | 873 | 885.5 | 898 | 910.5 | 923 | 935.5 | 948 | 960.5 | 973 | 985.5 | | | | |
| Weight [g] | 145.9 | 148.1 | 150.4 | 152.6 | 154.9 | 157.1 | 159.4 | 161.6 | 163.9 | 166.1 | 168.4 | 170.6 | 172.9 | 175.1 | 177.4 | | | | |

■ DIN rail dimensions/weight for the SY7000 **Plug-in** connector connecting base

VZ1000-11-4-□

* After confirming the L3 dimension in the dimensions table of each series, refer to the DIN rail dimensions table below and specify the number in the box □.



| No. | 0 | 1 | 2 | 3 | 4 | 5 | 6 | 7 | 8 | 9 | 10 | 11 | 12 | 13 | 14 | 15 | 16 | 17 | 18 |
|-------------|-------|-------|-------|-------|-------|-------|-------|-------|-------|-------|-------|-------|-------|-------|-------|-------|-------|-------|-------|
| L dimension | 98 | 110,5 | 123 | 135,5 | 148 | 160,5 | 173 | 185,5 | 198 | 210,5 | 223 | 235,5 | 248 | 260,5 | 273 | 285,5 | 298 | 310,5 | 323 |
| Weight [g] | 24,8 | 28 | 31,1 | 34,3 | 37,4 | 40,6 | 43,8 | 46,9 | 50,1 | 53,3 | 56,4 | 59,6 | 62,7 | 65,9 | 69,1 | 72,2 | 75,4 | 78,6 | 81,7 |
| No. | 19 | 20 | 21 | 22 | 23 | 24 | 25 | 26 | 27 | 28 | 29 | 30 | 31 | 32 | 33 | 34 | 35 | 36 | 37 |
| L dimension | 335,5 | 348 | 360,5 | 373 | 385,5 | 398 | 410,5 | 423 | 435,5 | 448 | 460,5 | 473 | 485,5 | 498 | 510,5 | 523 | 535,5 | 548 | 560,5 |
| Weight [g] | 84,9 | 88 | 91,2 | 94,4 | 97,5 | 100,7 | 103,9 | 107 | 110,2 | 113,3 | 116,5 | 119,7 | 122,8 | 126 | 129,2 | 132,3 | 135,5 | 138,6 | 141,8 |
| No. | 38 | 39 | 40 | 41 | 42 | 43 | 44 | 45 | 46 | 47 | 48 | 49 | 50 | 51 | 52 | 53 | 54 | 55 | 56 |
| L dimension | 573 | 585,5 | 598 | 610,5 | 623 | 635,5 | 648 | 660,5 | 673 | 685,5 | 698 | 710,5 | 723 | 735,5 | 748 | 760,5 | 773 | 785,5 | 798 |
| Weight [g] | 145 | 148,1 | 151,3 | 154,5 | 157,6 | 160,8 | 163,9 | 167,1 | 170,3 | 173,4 | 176,6 | 179,8 | 182,9 | 186,1 | 189,2 | 192,4 | 195,6 | 198,7 | 201,9 |
| No. | 57 | 58 | 59 | 60 | 61 | 62 | 63 | 64 | 65 | 66 | 67 | 68 | 69 | 70 | 71 | | | | |
| L dimension | 810,5 | 823 | 835,5 | 848 | 860,5 | 873 | 885,5 | 898 | 910,5 | 923 | 935,5 | 948 | 960,5 | 973 | 985,5 | | | | |
| Weight [g] | 205,1 | 208,2 | 211,4 | 214,5 | 217,7 | 220,9 | 224 | 227,2 | 230,4 | 233,5 | 236,7 | 239,8 | 243 | 246,2 | 249,3 | | | | |

Manifold Options **SY3000/5000/7000 Series**

⚠ Caution

| |
|--------------------------------------|
| Tightening torque for mounting screw |
| M2: 0.16 N·m (SY3000) |
| M3: 0.8 N·m (SY5000/7000) |

Manifold Options

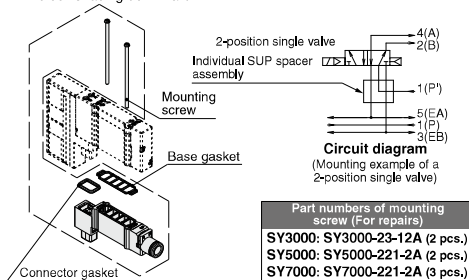
* Refer to pages 628 to 630 for dimensions.

■ Individual SUP spacer assembly

[With a connector gasket, a base gasket, and two mounting screws (3 pcs. for the SY7000)]

When the same manifold is used for different pressures, an individual SUP spacer assembly is used as a supply port for different pressures.

- * When selecting a One-touch fitting elbow type for a spacer assembly, use it faced upward, since it interferes with A and B port piping of Type 10 manifolds.
- * When the elbows are facing upward in A and B ports in Type 10 manifolds, they will interfere with the piping for the spacer assembly. Therefore, combine the A and B ports with straight types or elbows facing downward.

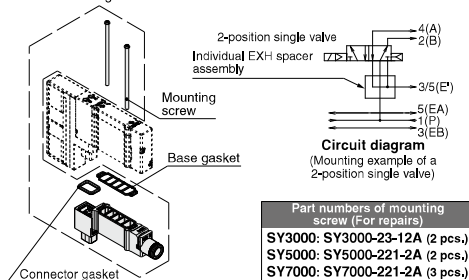


■ Individual EXH spacer assembly

[With a connector gasket, a base gasket, and two mounting screws (3 pcs. for the SY7000)]

When valve exhaust affects other stations due to the circuit configuration, this spacer assembly is used for individual valve exhaust.

- * When selecting a One-touch fitting elbow type for a spacer assembly, use it faced upward, since it interferes with A and B port piping of Type 10 manifolds.
- * When the elbows are facing upward in A and B ports in Type 10 manifolds, they will interfere with the piping for the spacer assembly. Therefore, combine the A and B ports with straight types or elbows facing downward.



How to Order Individual SUP/EXH Spacer Assembly

One-touch fitting Straight type SY **3** OM-**38**-**1** A-**C6**

One-touch fitting Elbow type SY **3** OM-**38**-**2** A-**L6**

Series

| | |
|---|--------|
| 3 | SY3000 |
| 5 | SY5000 |
| 7 | SY7000 |

Spacer type

| | |
|----|-----------------------|
| 38 | Individual SUP spacer |
| 39 | Individual EXH spacer |

Individual SUP/EXH spacer assembly

| | |
|---|------------------|
| 2 | Short elbow type |
| 3 | Long elbow type |

- * Select the long elbow type for a 3-position valve when using Type 11 and Type 12 downward. However, Type 11 of the SY3000 series for the mixed mounting of connector connecting bases cannot be used downward.

Port size (Metric/One-touch fittings)

| Symbol | P, E port | SY3000 | SY5000 | SY7000 |
|--------|-----------|--------|--------|--------|
| L4 | ø4 | ● | ● | — |
| L6 | ø6 | ● | ● | ● |
| L8 | ø8 | — | ● | ● |
| L10 | ø10 | — | — | ● |
| L12 | ø12 | — | — | ● |

Port size (Inch/One-touch fittings)

| Symbol | P, E port | SY3000 | SY5000 | SY7000 |
|--------|-----------|--------|--------|--------|
| LN3 | ø5/32" | ● | — | — |
| LN7 | ø1/4" | ● | — | — |
| LN9 | ø5/16" | — | ● | — |
| LN11 | ø3/8" | — | — | ● |

Port size (Metric/One-touch fittings)

| Symbol | P, E port | SY3000 | SY5000 | SY7000 |
|--------|-----------|--------|--------|--------|
| C2 | ø2 | ● | — | — |
| C3 | ø3,2 | ● | — | — |
| C4 | ø4 | — | ● | — |
| C6 | ø6 | ● | ● | ● |
| C8 | ø8 | — | ● | ● |
| C10 | ø10 | — | — | ● |
| C12 | ø12 | — | — | ● |

Port size (Inch/One-touch fittings)

| Symbol | P, E port | SY3000 | SY5000 | SY7000 |
|--------|-----------|--------|--------|--------|
| N1 | ø1/8" | ● | — | — |
| N3 | ø5/32" | ● | — | — |
| N7 | ø1/4" | ● | — | — |
| N9 | ø5/16" | — | ● | — |
| N11 | ø3/8" | — | — | ● |

- * When using in combination with the SY530□□-E (With residual pressure release valve), the length of the required mounting screws will differ. Please contact SMC for details.

| Model | Port size | | Flow rate characteristics | | | |
|-----------------|------------------|----------------|------------------------------|------|------------------------------|------|
| | 1, 3/5 (P, E) | 4, 2 (A, B) | 1 → 4/2 (P → A/B) | | 4/2 → 3/5 (A/B → E) | |
| | | | C [dm ³ /(s·bar)] | b | C [dm ³ /(s·bar)] | b |
| SY30M-38-1A-C6 | C8 | C6 | 1.2 | 0.32 | 1.4 | 0.24 |
| SY30M-39-1A-C6 | | | 1.2 | 0.27 | 1.1 | 0.27 |
| SY50M-38-1A-C8 | | | 2.7 | 0.36 | 3.3 | 0.22 |
| SY50M-39-1A-C8 | | | 2.2 | 0.37 | 2.2 | 0.36 |
| SY70M-38-1A-C12 | C12 | C12 | 4.8 | 0.26 | 4.7 | 0.25 |
| SY70M-39-1A-C12 | | | 4.9 | 0.28 | 4.7 | 0.23 |

* Calculation of effective area S and sonic conductance C: S = 5.0 x C

* The value is for manifold base with 5 stations, rubber seal, and individually operated 2-position type.

* For connector connecting base (type 10) manifolds

SY3000/5000/7000 Series

Caution

| |
|--------------------------------------|
| Tightening torque for mounting screw |
| M2: 0.16 N·m (SY3000) |
| M3: 0.8 N·m (SY5000/7000) |

Manifold Options

* Refer to pages 628 to 630 for dimensions.

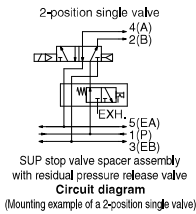
■ SUP stop valve spacer assembly with residual pressure release valve

[With a connector gasket, a base gasket, and two mounting screws
(3 pcs. for the SY7000)]

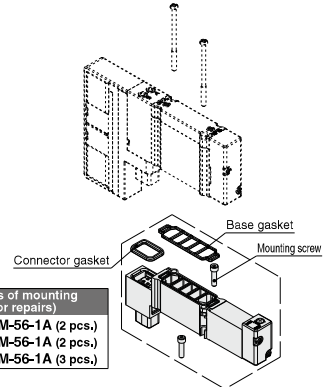
It is used to shut off the supply air to valves individually.

* Cannot be selected when the elbows are facing upward in A and B ports in Type 10 manifolds, since they will interfere with the piping for the spacer assembly

| Series | Manual override |
|----------|--------------------------------|
| 3 SY3000 | Nil |
| 5 SY5000 | Push-turn locking slotted type |
| 7 SY7000 | Push-turn locking lever type |



| Part numbers of mounting screw (For repairs) |
|--|
| SY3000: SY30M-56-1A (2 pcs.) |
| SY5000: SY50M-56-1A (2 pcs.) |
| SY7000: SY70M-56-1A (3 pcs.) |



* For lever type:

When locking the lever type manual override, push the lever down in the PUSH position with your fingers until it stops, then turn the lever 90° clockwise. (PUSH → LOCK)

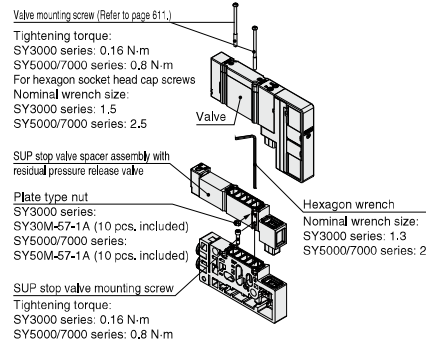
Turning the lever without pushing it down until it stops can cause damage to the manual override and other problems such as air leakages.

To unlock the manual override, turn the lever counterclockwise. (LOCK → PUSH)

[How to mount SUP stop valve spacer assembly with residual pressure release valve]
Insert the SUP stop valve mounting screw from the side of the spacer assembly, and mount it to the manifold.

Tighten the SUP stop valve mounting screw to the specified tightening torque. Mount the valve and tighten the valve mounting screws to the specified tightening torque after mounting the SUP stop valve spacer assembly with residual pressure release valve.

- * Install the plate type nut to the spacer assembly as shown in the figure if it comes off. The SUP stop valve mounting screws can be tightened with a hexagon wrench without removing the plate type nut.
- * When the elbows are facing upward in A and B ports in Type 10 manifolds, they will interfere with the piping for the spacer assembly. Therefore, combine the A and B ports with straight types or elbows facing downward.
- * This product is only for internal pilot specifications, as the external pilot air cannot be shut off.
- * If the product is equipped with a 3-position closed center, residual pressure cannot be released, so use in combination with a 3-port valve, which can be connected to the A, B piping port.



| Model | Port size | | Flow rate characteristics | | | |
|----------------|------------------|----------------|---------------------------|------|---------------------|------|
| | 1, 3/5 (P, E) | 4, 2 (A, B) | 1 → 4/2 (P → A/B) | | 4/2 → 3/5 (A/B → E) | |
| | | | C [dm³/(s·bar)] | b | C [dm³/(s·bar)] | b |
| SY30M-50-1A(E) | C8 | C6 | 0.6 | 0.18 | 1.4 | 0.29 |
| SY50M-50-1A(E) | C10 | C8 | 1.6 | 0.20 | 3.1 | 0.23 |
| SY70M-50-1A(E) | C12 | C12 | 3.1 | 0.18 | 4.3 | 0.32 |

* Calculation of effective area S and sonic conductance C: S = 5.0 x C

* The value is for manifold base with 5 stations, rubber seal, and individually operated 2-position type.

* For connector connecting base (type 10) manifolds

Manifold Options **SY3000/5000/7000 Series**

⚠ Caution

| |
|--------------------------------------|
| Tightening torque for mounting screw |
| M2: 0.16 N·m (SY3000) |
| M3: 0.8 N·m (SY5000/7000) |

Manifold Options

* Refer to pages 628 to 630 for dimensions.

■ Double check spacer assembly with residual pressure release valve (Side/Bottom ported)

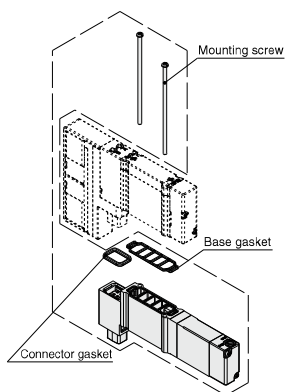
[With a connector gasket, a base gasket, and two mounting screws (3 pcs. for the SY7000)]

It is used to hold the intermediate position of the cylinder for a long period of time. Use a 3-position exhaust center valve when the double check spacer assembly with residual exhaust valve is used. It can also be used for drop prevention at the cylinder stroke end when supply residual pressure is released by using a 2-position single/double valve.

* When the elbows are facing upward in A and B ports in Type 10 manifolds, they will interfere with the piping for the spacer assembly. Therefore, combine the A and B ports with straight types or elbows facing downward.

| Series | Part no. |
|---------------|-------------|
| SY3000 | SY30M-60-1A |
| SY5000 | SY50M-60-1A |
| SY7000 | SY70M-60-1A |

| Applicable valve | Intermediate stop | Drop prevention |
|------------------|-----------------------------------|----------------------------------|
| | SY $\frac{3}{2}$ 40 $\frac{0}{1}$ | SY $\frac{3}{2}$ 0 $\frac{0}{1}$ |



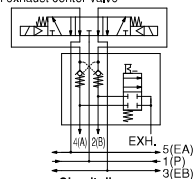
| Part numbers of mounting screw (For repairs) |
|--|
| SY3000: SY3000-23-27A (2 pcs.) |
| SY5000: SY5000-221-4A (2 pcs.) |
| SY7000: SY7000-221-4A (3 pcs.) |

⚠ Caution

- Air leakage from the pipe between the valve and cylinder or from the fittings will prevent the cylinder from stopping for a long period of time. Check the leakage using neutral household detergent, such as dish washing soap. Also, check the cylinder's tube gasket, piston seal, and rod seal for air leakage.
- Combining with 3-position closed center or pressure center valve will not work.
- If the exhaust of the double check spacer is restricted too much, the cylinder may not operate properly and may not stop intermediately.
- Set the cylinder load so that the cylinder pressure will be within two times that of the supply pressure.
- If using a double check spacer that is built in to the sub-plate, refer to page 696.

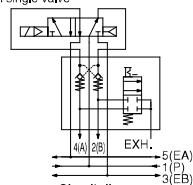
<Example>

Double check spacer assembly with residual pressure release valve
3-position exhaust center valve



(Intermediate stop: When 3-position exhaust center valve is mounted)

Double check spacer assembly with residual pressure release valve
2-position single valve



(Drop prevention: When 2-position single valve is mounted)

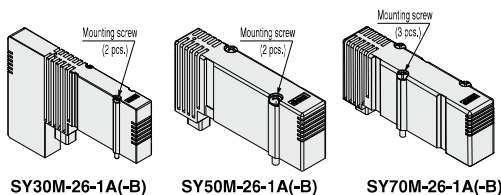
Specifications

| | |
|--------------------------------|------------------------------|
| Max. operating pressure | 1.0 MPa |
| Min. operating pressure | 0.1 MPa |
| Ambient and fluid temperatures | -10 to 50°C |
| Flow rate characteristics: C | |
| SY3000 | 0.3 dm ³ /(s·bar) |
| SY5000 | 0.7 dm ³ /(s·bar) |
| SY7000 | 1.1 dm ³ /(s·bar) |
| Max. operating frequency | 3 Hz |

■ Blanking plate assembly

[With two mounting screws (3 pcs. for the SY7000)]

Used when valve additions are expected or for maintenance. A structure is in place on the blanking plate to prevent the mounting screws from sliding.



How to Order Blanking Plate Assembly

SY **3**0M-26-1A-

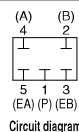
Series

| | |
|----------|--------|
| 3 | SY3000 |
| 5 | SY5000 |
| 7 | SY7000 |

Option for mounting

| | |
|------------|---|
| Nil | With mounting screw (Round head combination screw) |
| B | With mounting screw (Hexagon socket head cap screw) |

| Part numbers of mounting screw (Hexagon bolt) (For repairs) |
|---|
| SY3000: SY3000-23-24A [SY3000-222-1A] |
| SY5000: SY5000-221-1A [SY5000-222-1A] |
| SY7000: SY7000-221-2A [SY7000-222-1A] |



⚠ Caution

| |
|--------------------------------------|
| Tightening torque for mounting screw |
| M2: 0.16 N·m (SY3000) |
| M3: 0.8 N·m (SY5000/7000) |

* Refer to pages 628 to 630 for dimensions.

SY3000/5000/7000 Series

Caution

| |
|--------------------------------------|
| Tightening torque for mounting screw |
| M2: 0.16 N·m (SY3000) |
| M3: 0.8 N·m (SY5000/7000) |

Manifold Options

* Refer to pages 628 to 631 for dimensions.

Interface regulator

[With a connector gasket, a base gasket, and two mounting screws (3 pcs. for the SY7000)]

Used when the supply pressure for each valve on the same manifold must be individually set (reduced pressure).

How to Order

SY 3 0M-05-P-□

Series
3 SY3000

Pressure gauge option^{*1}
M1 Without pressure gauge
05 Pressure gauge with MPa display (For odd number station)
06 Pressure gauge with MPa display (For even number station)
N5 Pressure gauge with psi display (For odd number station)^{*2}
N6 Pressure gauge with psi display (For even number station)^{*2}

Applicable valve^{*3}
Nil For single, double, and 4-position
3 For 3-position

SY 5 0M-00-P-□

Series
5 SY5000
7 SY7000

Pressure gauge option^{*}
M1 Without pressure gauge
00 Pressure gauge with MPa display
N0 Pressure gauge with psi display^{*2}

Regulating port
P 1(P) port
A1 4(A) port (P controlled type, A port regulation)
B1 2(B) port (P controlled type, B port regulation)

Part numbers of mounting screw (for repair)
SY3000: SY3000-23-12A (2 pcs.)
SY5000: SY5000-221-6A (2 pcs.)
SY7000: SY7000-221-6A (3 pcs.)

SY30M-05/N5-□ SY30M-06/N6-□ SY30M-M1-□ SY50M-00/N0-□ SY50M-M1-□ SY70M-00/N0-□ SY70M-M1-□
(With pressure gauge/ (With pressure gauge/ (Without pressure gauge) (With pressure gauge) (Without pressure gauge) (With pressure gauge) (Without pressure gauge)
For odd number station) For even number station)

Specifications

| Interface regulator model | SY30M-□-□-□ | SY50M-□-□-□ | SY70M-□-□-□ |
|--------------------------------------|---------------------------|-----------------------|-------------|
| Applicable valve model ^{*1} | SY3□□□(R) | SY5□□□(R) | SY7□□□(R) |
| Regulating port | 1(P), 4(A), 2(B) | | |
| Set pressure range | 0.1 to 0.7 MPa | | |
| Maximum operating pressure | 1.0 MPa | | |
| Fluid | Air | | |
| Ambient and fluid temperatures | -10 to 50°C (No freezing) | | |
| Weight [g] ^{*2} | With pressure gauge | 33 (35) ^{*3} | 75 |
| | Without pressure gauge | 27 (29) ^{*3} | 69 |
| | | | 87 |

*1 3-position closed center and pressure center, and 4-position dual 3-port valves are only available for 1(P) port pressure regulation.

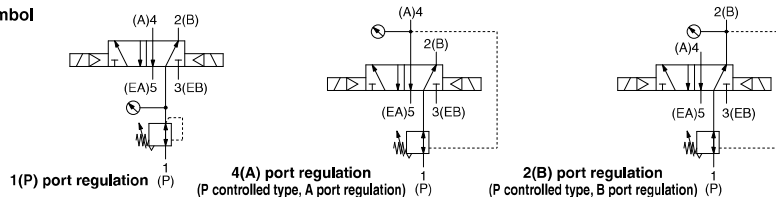
*2 Gasket and mounting screws are included in the weight.

*3 (): Denotes the values of SY30M-□-□-3

* Always apply pressure from 1(P) port in the base for interface regulator.

* When using in combination with the SY³30□□□□1-E (With residual pressure release valve), the length of the required mounting screws will differ. Please contact SMC for details.

Symbol



Manifold Options *SY3000/5000/7000 Series*

⚠ Caution

| |
|--------------------------------------|
| Tightening torque for mounting screw |
| M2: 0.16 N·m (SY3000) |
| M3: 0.8 N·m (SY5000/7000) |

Manifold Options: Spacer Combinations and Screw List ①

| Combination | | ① SY3000 (M2) | | ② SY5000 (M3) | | ③ SY7000 (M3) | | |
|-------------|---|---|---|---|---|---|---|---|
| | | Round head combination screw | Hexagon socket head cap screw | Round head combination screw | Hexagon socket head cap screw | Round head combination screw | Hexagon socket head cap screw | |
| | A | Valve | SY3000-23-24A [for 10 valves (20 pcs.)] | SY3000-222-1A [for 10 valves (20 pcs.)] | SY5000-221-1A [for 10 valves (20 pcs.)] | SY5000-222-1A [for 10 valves (20 pcs.)] | SY7000-221-1A [for 10 valves (30 pcs.)] | SY7000-222-1A [for 10 valves (30 pcs.)] |
| | B | SUP stop valve spacer assembly with residual pressure release valve | SY30M-56-2A (2 pcs.) | SY50M-56-2A (2 pcs.) | SY70M-56-2A (3 pcs.) | | | |
| | C | Individual SUP (EXH) spacer assembly | | | | | | |
| | | | | | | | | |
| | A | Valve | SY3000-23-33A (2 pcs.) | — | SY5000-221-5A (2 pcs.) | — | SY7000-221-5A (3 pcs.) | — |
| | B | Double check spacer assembly with residual pressure release valve | | | | | | |
| | C | Individual SUP (EXH) spacer assembly | | | | | | |
| | | A | Valve | SY3000-23-32A (2 pcs.) | — | SY5000-221-3A (2 pcs.) | — | SY7000-221-3A (3 pcs.) |
| B | | Individual SUP (EXH) spacer assembly | | | | | | |
| C | | Individual EXH (SUP) spacer assembly | | | | | | |
| | | A | Valve | SY3000-23-24A [for 10 valves (20 pcs.)] | SY3000-222-1A [for 10 valves (20 pcs.)] | SY5000-221-1A [for 10 valves (20 pcs.)] | SY5000-222-1A [for 10 valves (20 pcs.)] | SY7000-221-1A [for 10 valves (30 pcs.)] |
| | B | SUP stop valve spacer assembly with residual pressure release valve | SY30M-56-4A (2 pcs.) | SY50M-56-4A (2 pcs.) | SY70M-56-4A (3 pcs.) | | | |
| | C | Individual SUP (EXH) spacer assembly | | | | | | |
| | D | Individual EXH (SUP) spacer assembly | | | | | | |

* Mounting onto a manifold follows the order explained above.

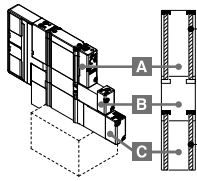
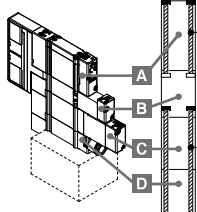
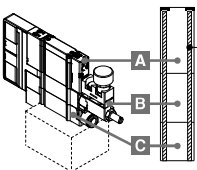
* The fitting for individual SUP/EXH spacers comes in a straight type only, since an elbow type would interfere with each spacer assembly when laminated.

SY3000/5000/7000 Series

⚠ Caution

| |
|--------------------------------------|
| Tightening torque for mounting screw |
| M2: 0.16 N·m (SY3000) |
| M3: 0.8 N·m (SY5000/7000) |

Manifold Options: Spacer Combinations and Screw List ②

| Combination | | ① SY3000 (M2) | | ② SY5000 (M3) | | ③ SY7000 (M3) | |
|---|---|---|---|---|---|---|---|
| | | Round head combination screw | Hexagon socket head cap screw | Round head combination screw | Hexagon socket head cap screw | Round head combination screw | Hexagon socket head cap screw |
|  <p> <Round head combination screw> ①: SY3000-23-24A ②: SY5000-221-1A ③: SY7000-221-1A <Hexagon socket head cap screw> ①: SY3000-222-1A ②: SY5000-222-1A ③: SY7000-222-1A ①: SY30M-56-3A ②: SY50M-56-3A ③: SY70M-56-3A </p> | A Valve | SY3000-23-24A [for 10 valves (20 pcs.)] | SY3000-222-1A [for 10 valves (20 pcs.)] | SY5000-221-1A [for 10 valves (20 pcs.)] | SY5000-222-1A [for 10 valves (20 pcs.)] | SY7000-221-1A [for 10 valves (30 pcs.)] | SY7000-222-1A [for 10 valves (30 pcs.)] |
| | B SUP stop valve spacer assembly with residual pressure release valve | SY30M-56-3A (2 pcs.) | | SY50M-56-3A (2 pcs.) | | SY70M-56-3A (3 pcs.) | |
| | C Double check spacer assembly with residual pressure release valve | | | | | | |
|  <p> <Round head combination screw> ①: SY3000-23-24A ②: SY5000-221-1A ③: SY7000-221-1A <Hexagon socket head cap screw> ①: SY3000-222-1A ②: SY5000-222-1A ③: SY7000-222-1A ①: SY30M-56-5A ②: SY50M-56-5A ③: SY70M-56-5A </p> | A Valve | SY3000-23-24A [for 10 valves (20 pcs.)] | SY3000-222-1A [for 10 valves (20 pcs.)] | SY5000-221-1A [for 10 valves (20 pcs.)] | SY5000-222-1A [for 10 valves (20 pcs.)] | SY7000-221-1A [for 10 valves (30 pcs.)] | SY7000-222-1A [for 10 valves (30 pcs.)] |
| | B SUP stop valve spacer assembly with residual pressure release valve | SY30M-56-5A (2 pcs.) | | SY50M-56-5A (2 pcs.) | | SY70M-56-5A (3 pcs.) | |
| | C Double check spacer assembly with residual pressure release valve | | | | | | |
| | D Individual EXH (SUP) spacer assembly | | | | | | |
|  <p> <Round head combination screw> ①: SY3000-23-32A ②: SY5000-221-7A ③: SY7000-221-7A </p> | A Valve | SY3000-23-32A (2 pcs.) | — | SY5000-221-7A (2 pcs.) | — | SY7000-221-7A (3 pcs.) | — |
| | B Interface regulator | | | | | | |
| | C Individual SUP (EXH) spacer assembly | | | | | | |

* Mounting onto a manifold follows the order explained above.

* The fitting for individual SUP/EXH spacers comes in a straight type only, since an elbow type would interfere with each spacer assembly when laminated.

* When laminating an interface regulator with other options, only the combinations in the table above are possible.

Manifold Options **SY3000/5000/7000 Series**

⚠ Caution

| |
|--------------------------------------|
| Tightening torque for mounting screw |
| M2: 0.16 N·m (SY3000) |
| M3: 0.8 N·m (SY5000/7000) |

Manifold Options

* Refer to pages 628 to 631 for dimensions.

■ Individual SUP block assembly

On the circuit of the plug-in connector connection base, an individual SUP block assembly can be used to supply air to a series of valves if a separate air supply is required, or if additional air is required for additional air flow.

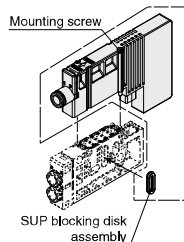
Individual SUP block assembly occupies 1 station. Blocking disks also supplied (2 pieces). Can be used to block both sides of the number of stations being isolated for individual air supply (as shown in example).

* Specify the mounting position of the block as well as the position where the SUP passage is to be blocked on the manifold specification sheet. Blocking is required for 1 or 2 positions for 1 set. (2 SUP blocking disks to block SUP is attached to individual SUP block.)

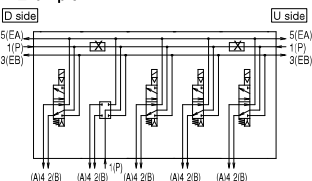
* Electrical wiring is connected to a number of stations in the individual SUP block manifold.

* When used in M10/11/12 (mixed mounting type), select the SY50M type for SS5Y5 and the SY70M type for SS5Y7.

* A structure to prevent screws falling out is in place on the individual SUP block, making it much harder for the mounting screws to fall out.



<Example>



How to Order Individual SUP/EXH Block Assembly

One-touch fitting Straight type SY **3** OM-**78**-1 A-**C6**

One-touch fitting Elbow type SY **3** OM-**78**-**2** A-**L6**

| Series | |
|--------|--------|
| 3 | SY3000 |
| 5 | SY5000 |
| 7 | SY7000 |

Block type

| | |
|----|----------------------|
| 78 | Individual SUP block |
| 79 | Individual EXH block |

Individual SUP/EXH block assembly

| | |
|---|----------------------------|
| 2 | Short elbow type (Type 12) |
| 3 | Long elbow type (Type 11) |

* Long elbow type is for the SY5000/7000 only.

Port size (Metric/One-touch fittings)

| Symbol | P, E port | SY3000 | SY5000 | SY7000 |
|--------|-----------|--------|--------|--------|
| L4 | ø4 | ● | ● | — |
| L6 | ø6 | ● | ● | ● |
| L8 | ø8 | — | ● | ● |
| L10 | ø10 | — | — | ● |
| L12 | ø12 | — | — | ● |

Port size (Inch/One-touch fittings)

| Symbol | P, E port | SY3000 | SY5000 | SY7000 |
|--------|-----------|--------|--------|--------|
| LN3 | ø5/32" | ● | — | — |
| LN7 | ø1/4" | ● | ● | — |
| LN9 | ø5/16" | — | ● | — |
| LN11 | ø3/8" | — | — | ● |

Port size (Metric/One-touch fittings)

| Symbol | P, E port | SY3000 | SY5000 | SY7000 |
|--------|-----------|--------|--------|--------|
| C2 | ø2 | ● | — | — |
| C3 | ø3.2 | ● | — | — |
| C4 | ø4 | ● | ● | — |
| C6 | ø6 | ● | ● | ● |
| C8 | ø8 | — | ● | ● |
| C10 | ø10 | — | — | ● |
| C12 | ø12 | — | — | ● |

Port size (Inch/One-touch fittings)

| Symbol | P, E port | SY3000 | SY5000 | SY7000 |
|--------|-----------|--------|--------|--------|
| N1 | ø1/8" | ● | — | — |
| N3 | ø5/32" | ● | ● | — |
| N7 | ø1/4" | ● | ● | ● |
| N9 | ø5/16" | — | ● | ● |
| N11 | ø3/8" | — | — | ● |

■ Individual EXH block assembly

On the circuit of the plug-in connector connection base, individual EXH block assembly can be used to individually exhaust series of valves when the exhaust from the valves would affect a number of other stations.

Individual EXH block assembly occupies 1 station.

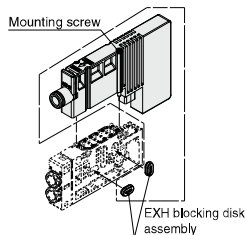
Blocking disks also supplied (4 pieces). Can be used to block both sides of the number of stations being isolated for individual exhaust. (as shown in example).

* Specify the mounting position of the block as well as the position where the EXH passage is to be blocked on the manifold specification sheet. Blocking is required for 1 or 2 positions for 1 set. (2 sets of EXH blocking disks (4 pcs.) to block EXH is attached to individual EXH block.)

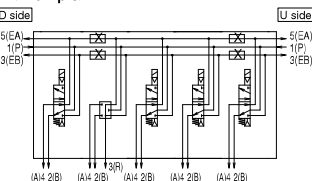
* Electrical wiring is connected to a number of stations in the individual EXH block manifold.

* When used in M10/11/12 (mixed mounting type), select the SY50M type for SS5Y5 and the SY70M type for SS5Y7.

* A structure to prevent screws falling out is in place on the individual EXH block, making it much harder for the mounting screws to fall out.



<Example>



SY3000/5000/7000 Series

Manifold Options

■ Blanking Plate with Output [With two mounting screws]

The blanking plate extracts the individual signal of the manifold valve.

Specifications

| | |
|-------------------|---|
| Number of outputs | 2 outputs |
| Load voltage | 12 VDC, 24 VDC (Dependent on the rated voltage of the built-in manifold) |
| Load current | 42 mA/point (Max.) |
| Enclosure | Dust proof (M12 connector: IP67) |

- * For serial transmission-capable manifolds, only the 24 VDC is applicable.
- * When non-polar type valves are mounted on the same manifold (excludes SI unit manifolds), be careful of surge voltage intrusion. Refer to page 706 for details.

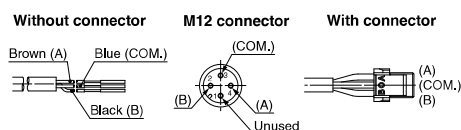
⚠ Caution

| |
|--|
| Tightening torque for mounting screw M2: 0.16 N·m |
|--|

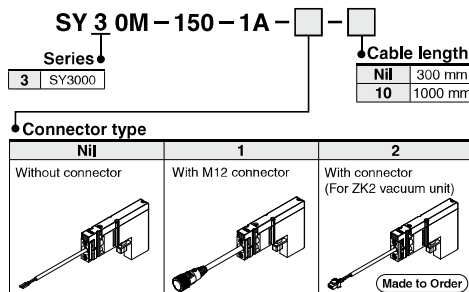
Output Polarity

| Manifold common specifications | A | B | COM. |
|--------------------------------|---|---|------|
| Positive common | - | - | + |
| Negative common | + | + | - |

* Specifications are the same as the manifold common specifications.



How to Order Blanking Plate with Output



* Refer to the specifications for output polarity.

■ SUP/EXH blocking disk assembly (for connector type manifold, Type 10, 11, 12)

[SUP blocking disk]

By inserting the SUP blocking disk in the pressure supply passage of the manifold valve, can provide two different high and low pressure in one manifold.

[EXH blocking disk]

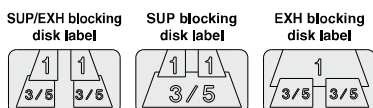
By inserting the EXH blocking disk in the exhaust passage of the manifold valve, can separate the exhaust from the valve so it does not affect the other valves. It can also be used for the manifold for the positive pressure and vacuum mixed manifold. (2 pcs. are required to block FA/EB both sides of the EXH.)



| Series | SUP blocking disk assembly | EXH blocking disk assembly |
|--------|----------------------------|----------------------------|
| SY3000 | SY30M-40-1A | SY30M-40-2A |
| SY5000 | SY50M-40-1A | SY50M-40-1A |
| SY7000 | SY70M-40-1A | SY70M-40-1A |

■ Label for blocking disk

Label to indicate and confirm on the manifold where the SUP/EXH blocking disk assemblies were inserted. (3 sheets each)



| Series | Part no. |
|--------|---------------|
| SY3000 | SJ3000-155-1A |
| SY5000 | |
| SY7000 | |



* If the blocking disk assembly is ordered using the manifold specification sheet and ordered at the same time as the manifold, the position where the blocking disk assembly is inserted will be labeled and shipped out.

Manifold Options **SY3000/5000/7000 Series**

Manifold Options

■ Back pressure check valve assembly (Retrofit or pre-installed type)

It prevents cylinder malfunction caused by other valve exhaust entry. Insert it into EA/EB port (valve mounting side) on the manifold side of a valve which is affected. It is effective when a single-acting cylinder is used.

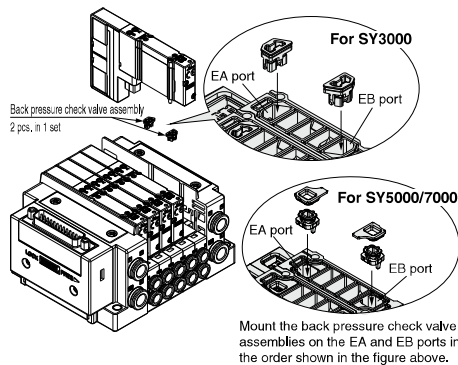
- * When ordering assemblies incorporated with a manifold, refer to the Ordering Example below (when installed in all stations.)
- * When a check valve for back pressure prevention is desired and is to be installed only in certain manifold stations, clearly indicate the part number and specify the mounting position on the manifold specification sheet.

<Precautions>

1. The manifold installed type back pressure check valve assembly is assembly parts with a check valve structure. However, since slight air leakage against the back pressure is allowed due to its structure, adverse effects of the back pressure due to increase in exhaust resistance cannot be prevented if the manifold exhaust port and other exhaust ports are put together for piping or if the piping diameter is narrowed. As a result, this may cause the actuator and air operated equipment to malfunction. So, be careful not to restrict the exhaust air. If the exhaust resistance becomes large, select a built-in valve type with rubber seal.
2. When the back pressure check valve assembly is mounted, please contact SMC for valve flow rate characteristics.

Ordering Example

SS5Y3-10F1-05B-C6.....1 set (Type 10 5-station manifold base part no.)
 *SY3201-5U1.....5 sets (2-position double part no.)
 *SY30M-24-1A.....5 sets (Back pressure check valve assembly part no.)
 The asterisk denotes the symbol for the assembly.



| Series | Part no. |
|--------|-------------|
| SY3000 | SY30M-24-1A |
| SY5000 | SY50M-24-1A |
| SY7000 | SY70M-24-1A |

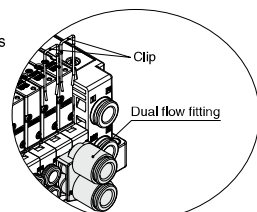
■ Dual flow fitting (for connector connecting base, Type 10, side ported)

This is a fitting for cylinder ports which enables simultaneous actuation and increase in flow rate of valves for 2 stations.

- * When ordering assemblies incorporated into a manifold, refer to the Ordering Example below and specify on the manifold specification sheet.

Ordering Example

SS5Y3-10F1-08B-CM
 *SY3100-5U1
 *SY30M-120-1A-C8
 The asterisk denotes the symbol for the assembly.



How to Order Dual Flow Fitting

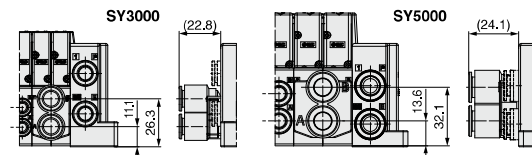
SY 3 OM - 120 - 1A - C8

Series

| | |
|---|--------|
| 3 | SY3000 |
| 5 | SY5000 |

• A, B port size (One-touch fittings)

| Symbol | A, B port | SY3000 | SY5000 |
|--------|-------------|--------|--------|
| C8 | Metric size | ø8 | — |
| C10 | — | ø10 | — |
| N9 | Inch size | ø5/16" | — |
| N11 | — | ø3/8" | — |



- * Specifically for side porting for a connector connecting base. Cannot be attached to bottom or top ported, or mixed mounting types that are metal or connector connecting bases.
- * When adding or changing clips, push them into the very end of the manifold for each station. Also, make sure to use the clip that was packed together, as the clip and the fitting for one station differ among products that can be used with the SY5000.
- * Not available for the SY7000 series.
- * Refer to the table below to see which spacers are applicable.

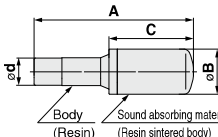
| Each type of spacer | Series | |
|---|--------|--------|
| | SY3000 | SY5000 |
| Individual SUP (EXH) spacer assembly | × | ○ |
| SUP stop valve spacer assembly with residual pressure release valve | × | ○ |
| Double check spacer assembly with residual pressure release valve | × | ○ |
| Interface regulator | × | × |

○: Can be built in ×: Cannot be built in

■ Silencer

(One-touch fitting connection type)

This silencer can be mounted to the 3/5 (E: EXH) port of the manifold in one step.

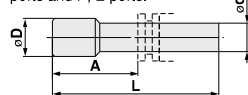


| Series | Model | Effective area | A | B | C |
|------------------|----------|--------------------|------|------|------|
| For SY3000 (ø8) | AN15-C08 | 20 mm ² | 45 | 13 | 20 |
| For SY5000 (ø10) | AN20-C10 | 30 mm ² | 57.5 | 16.5 | 30.5 |
| For SY7000 (ø12) | AN30-C12 | 41 mm ² | 71.5 | 20 | 43.5 |

- * Shipped together with the product

■ Plug

These are inserted in unused cylinder ports and P, E ports.



- * Shipped together with the product

Dimensions

| Applicable fitting size ød (Metric size) | Model | A | L | øD |
|---|---------|------|------|----|
| 2 | KJP-02 | 8.2 | 17 | 3 |
| 3.2 | KQ2P-23 | 16 | 31.5 | 5 |
| 4 | KQ2P-04 | 16 | 32 | 6 |
| 6 | KQ2P-06 | 18 | 35 | 8 |
| 8 | KQ2P-08 | 20.5 | 39 | 10 |
| 10 | KQ2P-10 | 22 | 43 | 12 |
| 12 | KQ2P-12 | 24 | 45.5 | 14 |

| Applicable fitting size ød (Inch size) | Model | A | L | øD |
|---|---------|------|------|------|
| 1/8" | KQ2P-01 | 16 | 31.5 | 5 |
| 5/32" | KQ2P-03 | 16 | 32 | 6 |
| 1/4" | KQ2P-07 | 18 | 35 | 8.5 |
| 5/16" | KQ2P-09 | 20.5 | 39 | 10 |
| 3/8" | KQ2P-11 | 22 | 43 | 11.5 |
| 1/2" | KQ2P-13 | 24 | 46 | 15 |



Manifold Options **SY3000/5000/7000 Series**

Manifold Options

* A transparent plastic plate to put a label with the name of the function of the solenoid valve

■ If adding a name plate

If adding a name plate to a manifold in use, order a name plate bracket assembly, in addition to ordering a name plate.
Refer to the table below for the part number and the amount.

Name plate part number

| Model | | SS5Y3-10 | SS5Y5-10/11 | SS5Y7-(M)10/11 | Note |
|------------|-------------|-------------|-------------|----------------|-----------------------|
| Name plate | Printed | SY30M-86-□N | SY50M-86-□N | SY70M-86-□N | □: Number of stations |
| | No printing | SY30M-86-□ | SY50M-86-□ | SY70M-86-□ | (1 to 24) |

Name plate bracket assembly part number and number of items ordered

| Model | | SS5Y3-10 | SS5Y5-10/11 |
|---|------------------------------------|----------------|-------------|
| Name plate assembly part number | | SY30M-85-1A | SY50M-85-1A |
| Manifold SUP/EXH block assembly Pilot type and P, E port entry | Internal pilot U/D piping | 2 pcs. | 2 pcs. |
| | Internal pilot double sided piping | 2 pcs. | |
| | External pilot U/D piping | 1 pc.*1 | |
| | External pilot double sided piping | Not required*1 | |

*1 If the manifold is an external pilot, an insertion slot for name plates is on the port block of the SUP/EXH block assembly. Thus, a bracket assembly is no longer required on the port piping side.

* Name plate bracket assembly is not required for the SY7000.

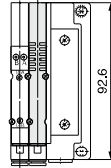
⚠ Caution

1. Be sure to shut off the power and air supplies before mounting the name plate bracket assembly. Furthermore, since air may remain inside the actuator, piping, and manifold, confirm that the air is completely exhausted before performing any work.
2. When disassembly and assembly are performed, air leakage may result if the tightening of the bracket mounting screws is inadequate.

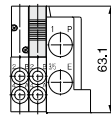
SY3000/5000/7000 Series

Dimensions: Manifold Options/SY3000 Series

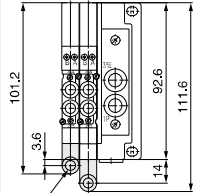
Blanking plate assembly



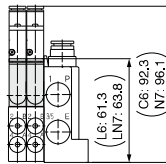
<Type 10, 12>



Individual SUP/EXH spacer assembly (Top ported)

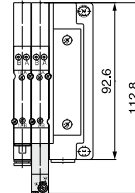


One-touch fitting
(SUP port, EXH port)
Applicable tubing O.D.: ø4, ø5/32"
: ø6, ø1/4"

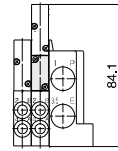


<Type 12>

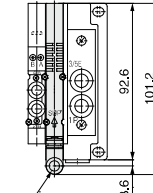
Double check spacer assembly with residual pressure release valve



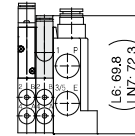
<Type 10>



Individual SUP/EXH block assembly (Top ported)

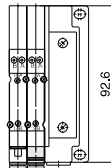


One-touch fitting
(SUP port, EXH port)
Applicable tubing O.D.: ø4, ø5/32"
: ø6, ø1/4"

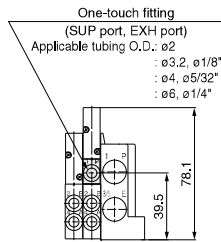


<Type 12>

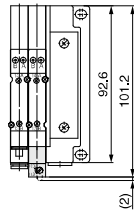
Individual SUP/EXH spacer assembly (Side ported)



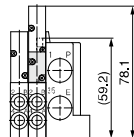
<Type 10>



SUP stop valve spacer assembly with residual pressure release valve

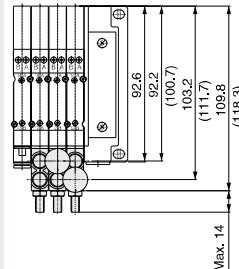


<Type 10, 12>

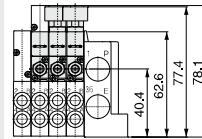


* The dimensions within () apply to the SY30M-50-1AE.

Interface regulator

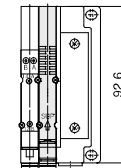


<Type 10, 12>

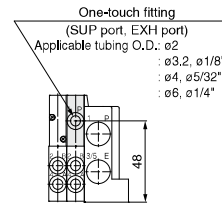


* The dimensions within () apply to the SY30M-□□-3.

Individual SUP/EXH block assembly (Side ported)



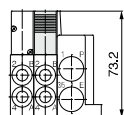
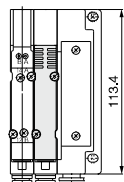
<Type 10>



Manifold Options *SY3000/5000/7000 Series*

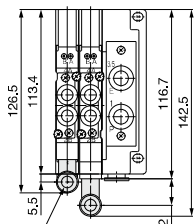
Dimensions: Manifold Options/SY5000 Series

■ Blanking plate assembly

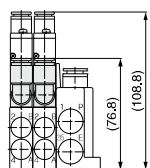


<Type 10, 11, 12>

■ Individual SUP/EXH spacer assembly (Top/Bottom ported)

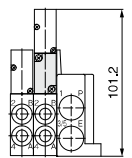
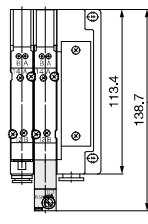


One-touch fitting
(SUP port, EXH port)
Applicable tubing O.D.: ø4,
: ø6, ø1/4"
: ø8, ø5/16"



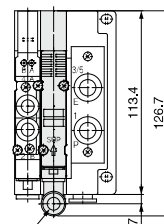
<Type 11, 12>

■ Double check spacer assembly with residual pressure release valve

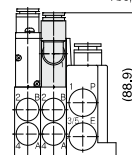


<Type 10, 11>

■ Individual SUP/EXH block assembly (Top ported)

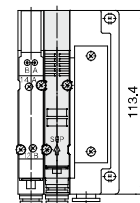


One-touch fitting
(SUP port, EXH port)
Applicable tubing O.D.: ø4
: ø6, ø1/4"
: ø8, ø5/16"

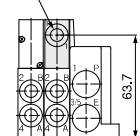


<Type 12>

■ Individual SUP/EXH block assembly (Side ported)

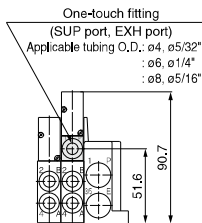
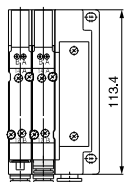


One-touch fitting
(SUP port, EXH port)
Applicable tubing O.D.: ø4, ø5/32"
: ø6, ø1/4"
: ø8, ø5/16"



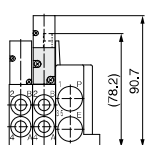
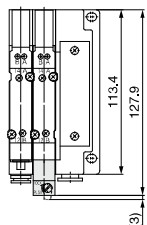
<Type 10>

■ Individual SUP/EXH spacer assembly (Side ported)



<Type 10>

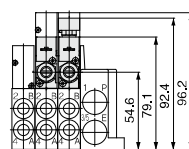
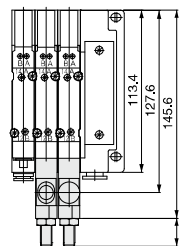
■ SUP stop valve spacer assembly with residual pressure release valve



<Type 10, 11, 12>

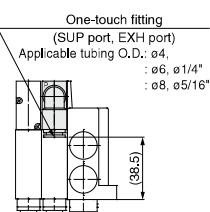
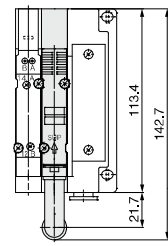
* The dimensions within () apply to the SY50M-50-1AE.

■ Interface regulator



<Type 10, 11, 12>

■ Individual SUP/EXH block assembly (Side ported)

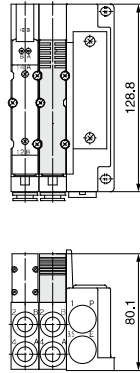


<Type 11>

SY3000/5000/7000 Series

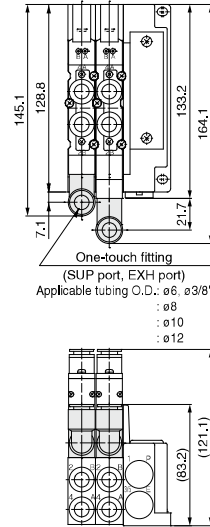
Dimensions: Manifold Options/SY7000 Series

Blanking plate assembly



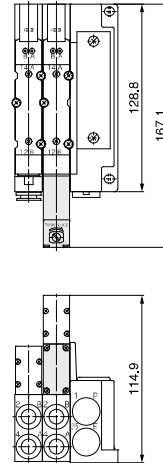
<Type 10, 11, 12>

Individual SUP/EXH spacer assembly (Top/Bottom ported)



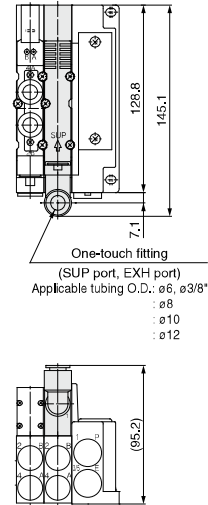
<Type 11, 12>

Double check spacer assembly with residual pressure release valve



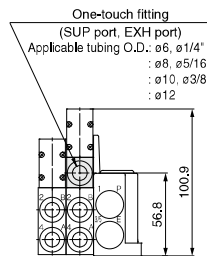
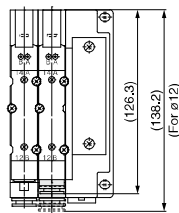
<Type 10, 11>

Individual SUP/EXH block assembly (Top ported)



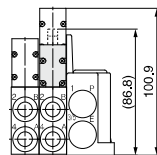
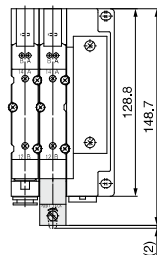
<Type 12>

Individual SUP/EXH spacer assembly (Side ported)



<Type 10>

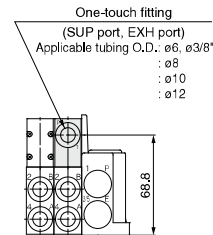
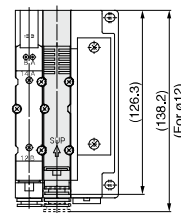
SUP stop valve spacer assembly with residual pressure release valve



<Type 10, 11, 12>

* The dimensions within () apply to the SY70M-50-1AE.

Individual SUP/EXH block assembly (Side ported)

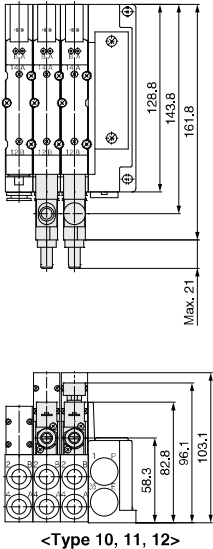


<Type 10>

Manifold Options **SY3000/5000/7000 Series**

Dimensions: Manifold Options/SY7000 Series

■ Interface regulator



■ Individual SUP/EXH block assembly (Bottom ported)

